



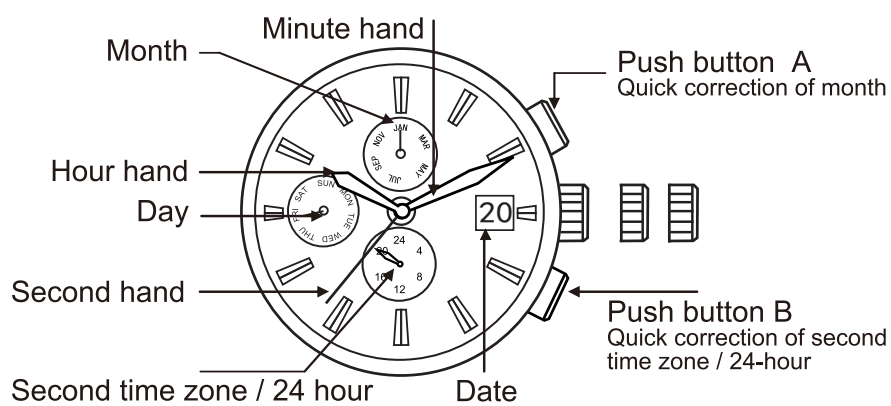
Precautions

- Do NOT operate any button when swimming or diving under water. In case of existence of water fog or drop on the interior surface of the Looking glass, please contact the authorized maintenance center for maintenance to avoid corrosion to internal electronic components.
- Clean the surface with a soft cloth and clean water instead of chemicals (esp. soap water); otherwise, the rubber seal inside the case may be damaged.
- Long-duration use of cold-light LCD may take much power.*
- Please avoid strong shock (exc. Anti-shock series watches). The electronic watch can bear common shock. However, it may be damaged if subject to rough use or dropped to a hard surface.
- Do NOT expose the watch to environments which is too hot or cold.
- Do NOT expose the watch to strong electric field or environment with high radio frequency.
- To avoid degraded service life, do not illuminate the EL lamp more than five Times on each day.*
- The cold-light LCD is unapparent if the watch is exposed to sunlight.*
- The monthly error is $\leq \pm 40 \text{ sec.}$ at normal temperature of 5 to 35°C (ranging within international standard allowance).

*Suitable for LED or LCD model only

QTI1

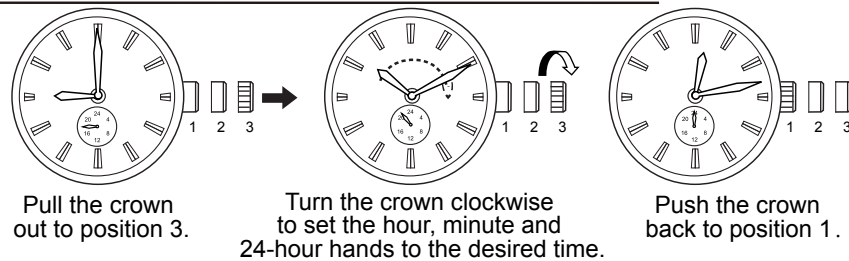
Function: Month, date, day, Second time zone / 24-hour



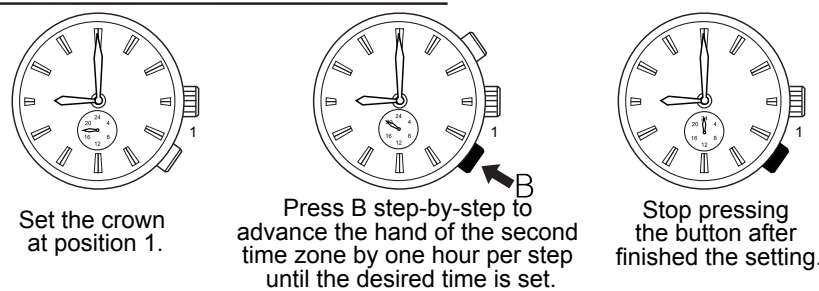
Crown Positions :

1. Normal position
2. Quick correction of date
3. Correction of hour, minute, day, date and second time zone/ 24-hour

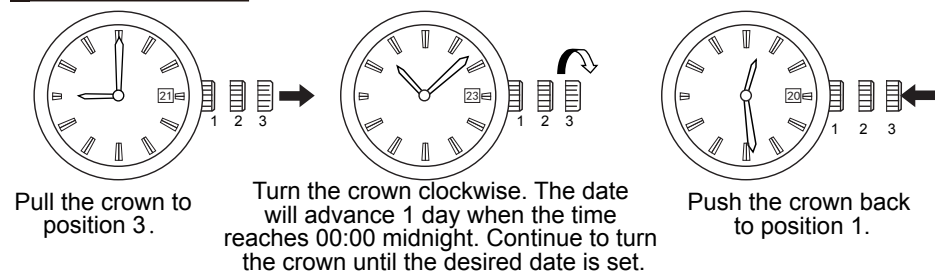
■ Set the time-Hour, Minute and 24-Hour



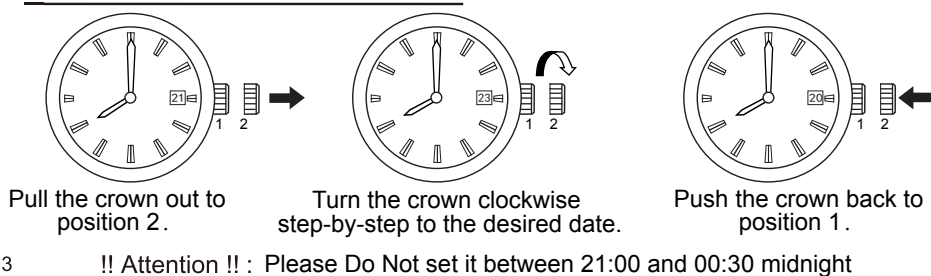
■ Set the Second Time Zone



■ Set the Date

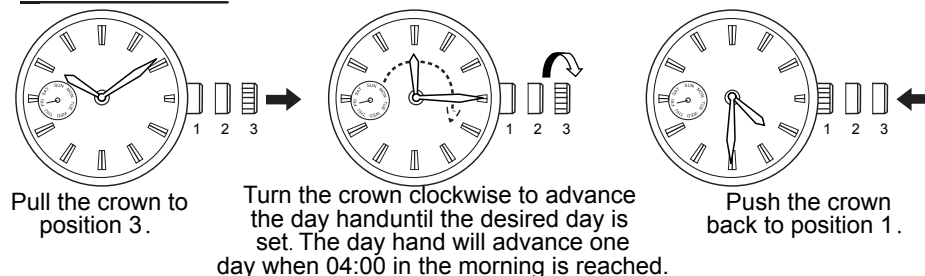


■ Quick Correction of Date

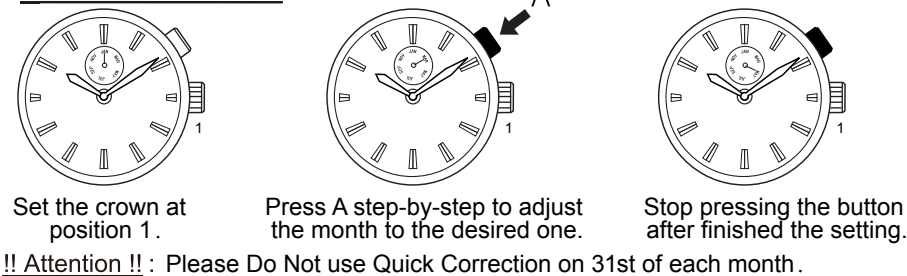


!! Attention !! : Please Do Not set it between 21:00 and 00:30 midnight

■ Set the Day



■ Set the Month



!! Attention !! : Please Do Not use Quick Correction on 31st of each month.

BATTERY CHANGE

The miniature battery which powers your watch should last approximately 2 years. However, because the battery is inserted at the factory to check the function and performance of the watch, its actual life once in your possession may be less than the specified period. When the battery expires, be sure to replace it as soon as possible to prevent any malfunction. For battery replacement, we recommend that you contact an AUTHORIZED DEALER and request the battery.

* The battery life may be less than 2 years if the alarm (if have) is used more than 10 seconds a day.

▲ WARNING

- Do not remove the battery from the watch.
- If it is necessary to take out the battery, keep it out of the reach of children. If a child swallows it, consult a doctor immediately.

▲ CAUTION

- Never short-circuit, heat or otherwise tamper with the battery, and never expose it to fire. The battery may burst, become very hot or catch fire.
- The battery is not rechargeable. Never attempt to recharge it, as this may cause battery leakage or damage to the battery.